



## **Scifi Catalogue**

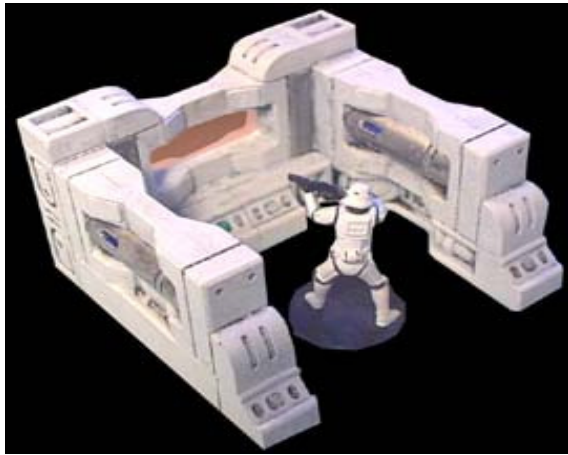
## Storeroom



This is a set models are for the 25mm scale. Each model is highly detailed and can be used for a number of periods in history.

---

## Small Control Room



This kit will produce the small control room. The model is in the 25mm scale.. The model features textured walls, curved corners and door.

---

## Testing Centre



This kit will produce the testing centre for use in sci fi/future setting. The model features Walls with pipes, Curved corners, Testing station, Windows, 2 doors and other features.

## Observation Lounge



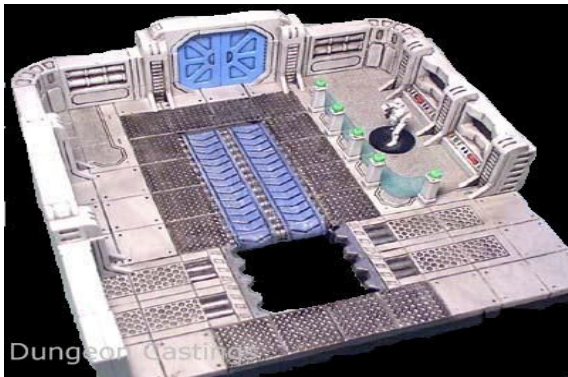
This kit will produce a set of six walls for use in sci fi/future setting for the 25mm scale. The model features Walls with pipes, 2 doors with window and frame, 5 windows,, Curved corners, and other features.

## Cargo Room Walls



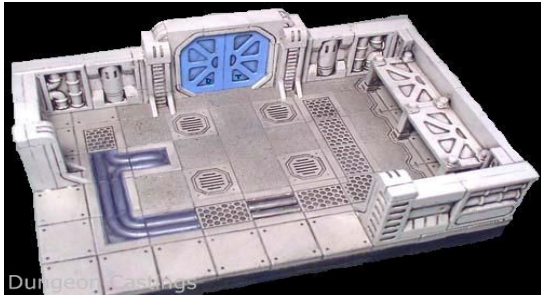
This kit will produce a set of six walls for use in sci fi/future setting. The model features Walls with pipes, Curved corners, and other features.

## Main Cargo Bay



This model is of the main cargo bay, one of the largest models we produce in the sci-fi range with a base size of 9 inches x 9 inches. The model can be used with the other models in the range to produce a spaceship layout which can be used for games like Space Hulk. The model features 2 conveyor belts, pipes, metal flooring. The walls feature control panels pipes and 2 removable doorways as well as warning posts. The model and room are all in the 25mm scale.

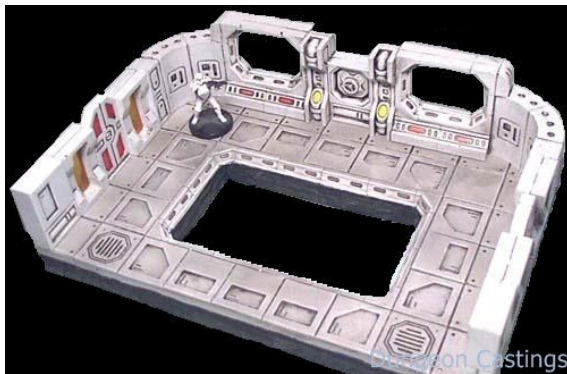
## Cargo Storage



This model is of the cargo storage. This has a base size of 6 inches x 9 inches. The model can be used with the other models in the range to produce a spaceship layout which can be used for games like Space Hulk. The model features shelves, pipes, metal flooring. The walls feature shelves, pipes and removable doorway as well as warning features. The model and room are all in the 25mm scale.

---

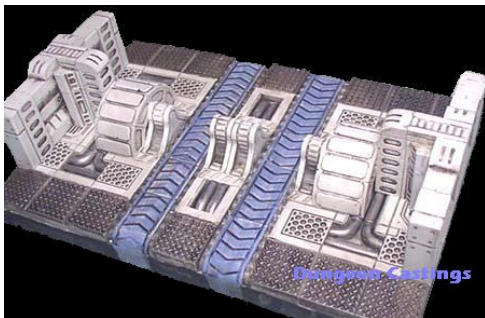
## Docking Bay



This model is of the docking bay, one of the largest models we produce in the sci-fi range with a base size of 6 inches x 9 inches. The model can be used with the other models in the range to produce a spaceship layout which can be used for games like Space Hulk. The model features 2 control panels, Hatch, grates, Windows and 2 Doors..

---

## Processing Centre



This model is of the main cargo bay, one of the largest models we produce in the sci-fi range with a base size of 9 inches x 9 inches. The model can be used with the other models in the range to produce a spaceship layout which can be used for games like Space Hulk. The model features 2 conveyor belts, pipes, metal flooring. The walls feature control panels pipes and 2 removable doorways as well as warning posts. The model and room are all in the 25mm scale.

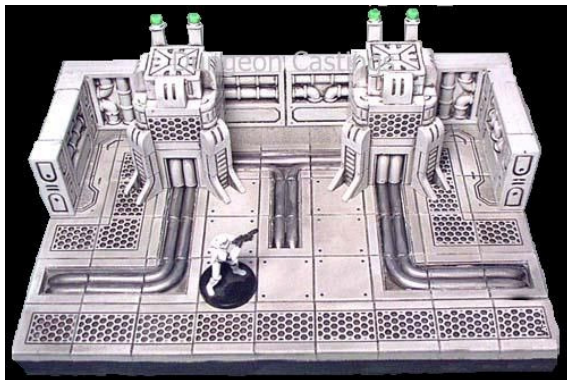
## Elevator



This kit will produce the elevator. The model is in the 25mm scale.. The model features textured walls, curved corners and door.

---

## Power Terminal Room



This kit will produce the power terminal room for use in sci fi/future setting as well as a number of games like space hulk. The model is in the 25mm scale.. The model features 2 removable power terminal models with details on all 4 sides, Floors with pipes, Textured floors, Walls with pipes on both sides of the walls,

---

## Medlab



This is a model of the med lab. The scale of the model is 25mm scale and is part of a fantastic range of starship models for use with role playing games. This model features a number of features which include beds. textured walls and floors.

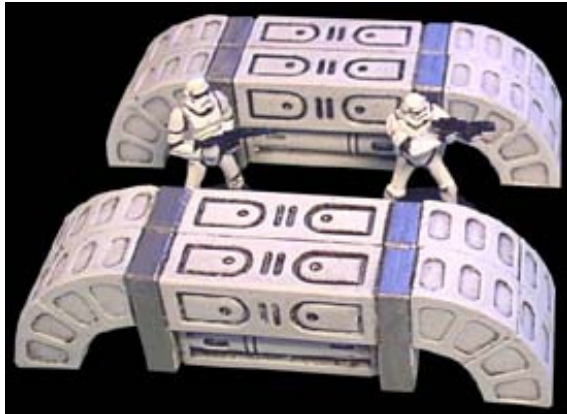
## Commutations Tower



This kit is for the commutations tower. This model can be used within a starship model or for a wargame setting.

---

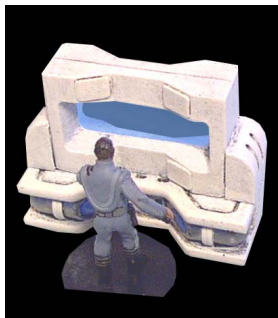
## Large Conduit



This kit will produce 2 large conduits for the scifi type of game. The scale of the models are for the 25mm scale.

---

## View Screen



This kit will produce the view screen. The model is in the 25mm scale.. The model features textured angled corners screen section.

## Power Nodes



This kit will produce 2 power node models. The model is in the 25mm scale.. The model features textured angled corners and

---

## Crates and Barrels



In this set you will find 4 large crates,4 medium crates and 8 barrels. This model has been designed for the 25mm scale.

---

## Scifi Floors

